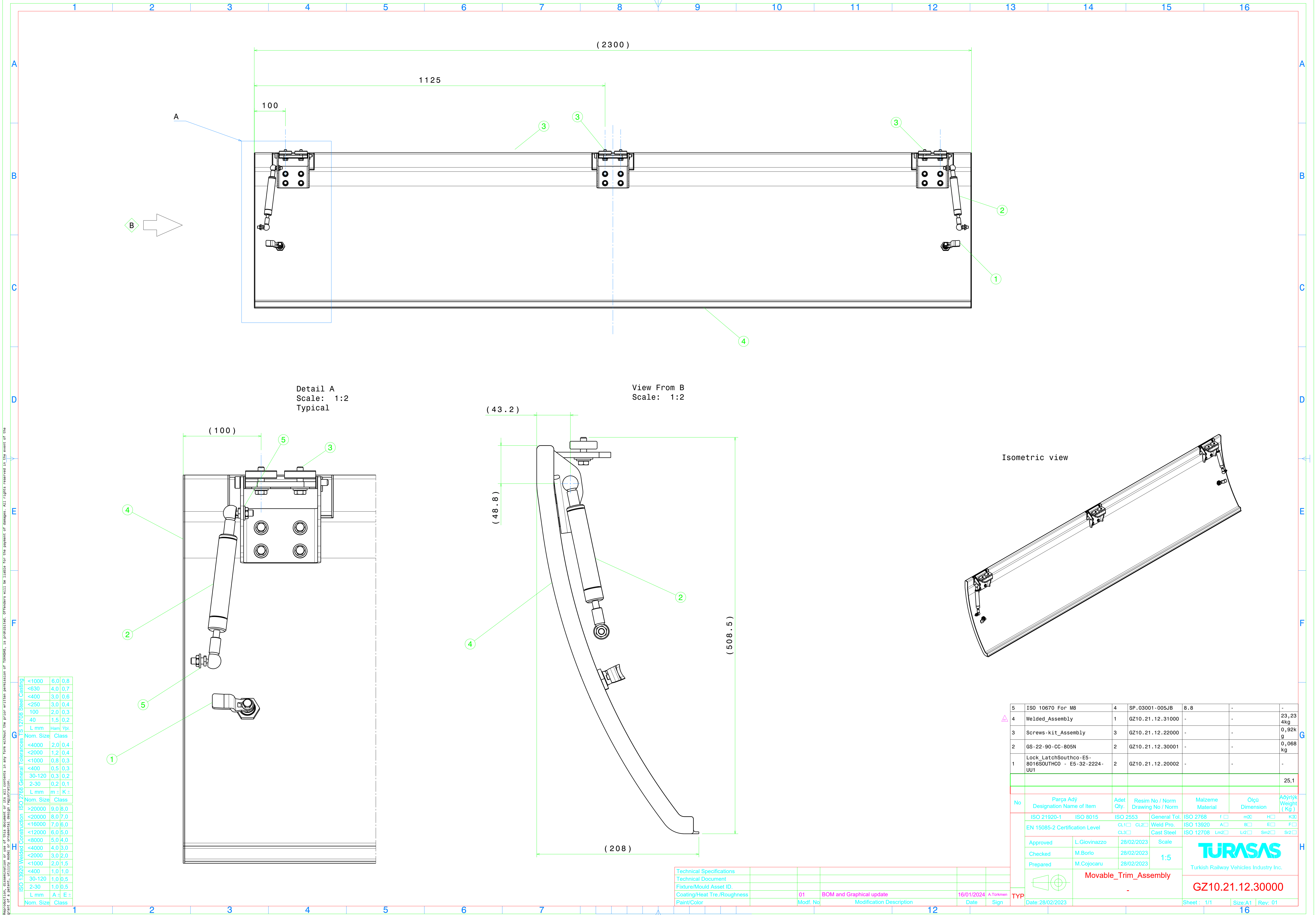


Reproduction, dissemination or use of this document or its all contents in any form without the prior written permission of TURASAS is prohibited. Offenders will be liable for the payment of damages. All rights reserved in the event of the right of a patent, utility model, trademark, copyright.



ISO 13920 Welded Construction		
Nom. Size	Class	
<1000	6,0	0,8
<630	4,0	0,7
<400	3,0	0,6
<250	3,0	0,4
100	2,0	0,3
40	1,5	0,2
L mm	Ham	Ypl.
ISO 2768 General Tolerances		
Nom. Size	Class	
<4000	2,0	0,4
<2000	1,2	0,4
<1000	0,8	0,3
<400	0,5	0,3
30-120	0,3	0,2
2-30	0,2	0,1
L mm	m	K ±
ISO 13920 Welded Construction		
Nom. Size	Class	
>20000	9,0	8,0
<20000	8,0	7,0
<16000	7,0	6,0
<12000	6,0	5,0
<8000	5,0	4,0
<4000	4,0	3,0
<2000	3,0	2,0
<1000	2,0	1,5
<400	1,0	1,0
30-120	1,0	0,5
2-30	1,0	0,5
L mm	A ±	E ±
Nom. Size	Class	

Technical Specifications					
Technical Document					
Fixture/Mould Asset ID					
Coating/Heat Tre./Roughness					
Paint/Color					
01	BOM and Graphical update	16/01/2024	A.Turkmen		
Modf. No	Modification Description	Date	Sign		

5	ISO 10670 For M8	4	SP.03001-005JB	8.8	-	-
4	Welded_Assembly	1	GZ10.21.12.31000	-	-	23,23 4kg
3	Screws-kit_Assembly	3	GZ10.21.12.22000	-	-	0,92k g
2	GS-22-90-CC-805N	2	GZ10.21.12.30001	-	-	0,068 kg
1	Lock_LatchSouthco-E5-8016SOUTHCO - E5-32-2224-UU1	2	GZ10.21.12.20002	-	-	-
						25,1
No	Parça Adı Designation Name of Item	Adet Qty.	Resim No / Norm Drawing No / Norm	Malzeme Material	Ölçü Dimension	Ağırlık Weight (Kg)
	ISO 21920-1	ISO 8015	ISO 2553	General Tol.	ISO 2768	f □ mX □ H □ KX □
	EN 15085-2 Certification Level	CL1 □ CL2 □ CL3 □	Weld Pro. Cast Steel	ISO 13920	A □ B □ E □ F □	
	Approved	L.Giovinazzo	28/02/2023	Scale		
	Checked	M.Borio	28/02/2023	1:5		
	Prepared	M.Cojocar	28/02/2023			
	Movable_Trim_Assembly					
	-					
	TURASAS			Turkish Railway Vehicles Industry Inc.		
				GZ10.21.12.30000		
				Sheet : 1/1 Size:A1 Rev: 01		